



Description			
Nom	Inventory example 2	Date	01/01/2016
Bassin	ADOUR-GARONNE	PK (km)	342,00
Rivière	GARONNE	Température	16,00
Site	AGEN	Code Hydro	756
N°Prep.	22	Lat. 44,20500	Long. 0,60600

Statistiques			
Espèces	38	Equitabilité	0,61
Population	539	Nb. genres	19
Diversité	3,21		

Prélèvement	
Prélèvement	Epidendrophyton
Nature substrat	Blocs ou pierres
Particularité	Milieus temporaires
Faciès	Aucun courant

Préleveur : J.M. Smith

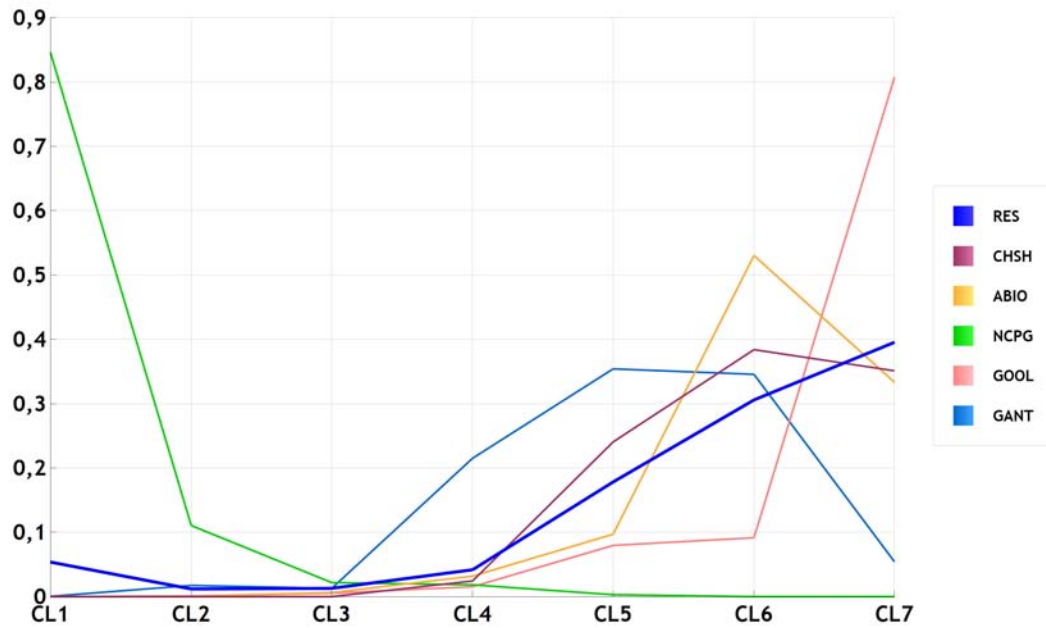
### Indices:

Indice	Note	Espèces utilisées		Abd. effective		Indice	Note	Espèces utilisées		Abd. effective	
		%	Nombre	%	Abd.			%	Nombre	%	Abd.
CEE	17.0	71.1%	27	34.5%	186	IPS	17.0	94.7%	36	94.8%	511
Descy	17.7	50%	19	23.6%	127	Lobo	8.0	36.8%	14	11.7%	63
EPI-D	17.4	73.7%	28	34.3%	185	Rott TI	16.7	76.3%	29	80.1%	432
Hurl.	18.2	76.3%	29	34.5%	186	Rott SI	19.3	76.3%	29	87.2%	470
IBD	18.9	94.7%	36	94.8%	511	SHE	15.1	65.8%	25	32.8%	177
IBD 2014	18.9	94.7%	36	94.8%	511	Sla.	15.7	68.4%	26	25.6%	138
IDAP	12.8	21.1%	8	7.1%	38	TDIL	12.1	34.2%	13	13%	70
IDG	16.7	100%	38	100%	539	WAT	12.5	39.5%	15	21%	113
IDP	12.6	34.2%	13	10.6%	57	TDI	17.2	84.2%	32	89.1%	480
IDS/E	4.01	57.9%	22	25.2%	136						

CODE	Dénomination	Abd.	%	SANDRE	FAM	GENRE	IPS s	IPV v
CHSH*	<i>Chamaepinnularia soehrensii</i> var. <i>hassiac</i> (Kraske) Lange-Bertalot	285	52.9	11890	NA	CHAM	5	1
ABIO*	<i>Achnanthes bioretii</i> Germain	37	6.9	32063	MO	ACHN	5	1
CARE	<i>Cyclotella arentii</i> Kolbe	22	4.1	32305	CE	CYCL	0	0
NCPG*	<i>Navicula capitatoradiata</i> Germain f. <i>anormale</i>	21	3.9	15132	NA	NAVI	1	3
GOOL	<i>Gomphonema olivaceum</i> var. <i>olivaceoides</i> (Hustedt) Lange-Bertalot	15	2.8	7702	NA	GOMP	5	1
GANT*	<i>Gomphonema angustum</i> Agardh	13	2.4	7630	NA	GOMP	5	1
CDEL*	<i>Cymbella delicatula</i> Kützing	11	2	7288	NA	CYMB	5	1
FARC*	<i>Fragilaria arcus</i> (Ehrenberg) Cleve var. <i>arcus</i>	9	1.7	6642	AR	FRAG	5	2
DMES*	<i>Diatoma mesodon</i> (Ehrenberg) Kützing	9	1.7	6624	AR	DIAT	5	3
FCAH*	<i>Fragilaria capucina</i> Desmazieres subsp. <i>amphicephala</i> (Kützing) Lange-Bertalot	7	1.3	6651	AR	FRAG	4	1
DTCR*	<i>Denticula tenuis</i> Kützing var. <i>crassula</i> (Naegeli in Kützing) Hustedt	7	1.3	8795	NI	DENT	5	1
DEHR*	<i>Diatoma ehrenbergii</i> Kützing	7	1.3	6615	AR	DIAT	4	3
UULN*	<i>Ulnaria ulna</i> (Nitzsch) Compère	6	1.1	6849	AR	ULNA	3	1
FGRA*	<i>Fragilaria gracilis</i> Østrup	6	1.1	6679	AR	FRAG	4.8	1
FCVA*	<i>Fragilaria capucina</i> Desmazieres var. <i>vaucheriae</i> (Kützing) Lange-Bertalot	6	1.1	6658	AR	FRAG	3.4	1
ENMI*	<i>Encyonema minutum</i> (Hilse in Rabh.) D.G. Mann in Round Crawford & Mann	6	1.1	7435	NA	ENCY	4	2
ENME*	<i>Encyonema mesianum</i> (Cholnoky) D.G. Mann in Round Crawford & Mann	6	1.1	7434	NA	ENCY	5	3
CPLA*	<i>Cocconeis placentula</i> Ehrenberg var. <i>placentula</i>	6	1.1	12097	MO	COCO	4	1
HAFF	<i>Handmannia affinis</i> (Grunow) Kociolek & Khursevich	6	1.1	38413	CE	HAND	0	0
GPUM	<i>Gomphonema pumilum</i> (Grunow) Reichardt & Lange-Bertalot	4	0.7	7719	NA	GOMP	4.5	1
GPAR*	<i>Gomphonema parvulum</i> (Kützing) Kützing var. <i>parvulum</i> f. <i>parvulum</i>	4	0.7	14114	NA	GOMP	2	1
FCAU*	<i>Fragilaria capucina</i> Desmazieres var. <i>austriaca</i> (Grunow) Lange-Bertalot	4	0.7	6652	AR	FRAG	5	1
DVUL*	<i>Diatoma vulgare</i> Bory	4	0.7	6631	AR	DIAT	4	1
DHIE*	<i>Diatoma hyemale</i> (hiemale) (Roth) Heiberg	4	0.7	12429	AR	DIAT	5	3
CPLI*	<i>Cocconeis placentula</i> Ehrenberg var. <i>lineata</i> (Ehr.) Van Heurck	4	0.7	7232	MO	COCO	4	1
CHEL*	<i>Cymbella helvetica</i> Kützing	4	0.7	7304	NA	CYMB	5	3
CAFF*	<i>Cymbella affinis</i> Kützing var. <i>affinis</i>	4	0.7	11432	NA	CYMB	4	2
SANG*	<i>Surirella angusta</i> Kützing	2	0.4	8483	SU	SURI	4	1
NLIN*	<i>Nitzschia linearis</i> (Agardh) W.M. Smith var. <i>linearis</i>	2	0.4	8955	NI	NITZ	3	2
NHAN	<i>Nitzschia hantzschiana</i> Rabenhorst	2	0.4	8919	NI	NITZ	5	2
NCTO*	<i>Navicula cryptotenelloides</i> Lange-Bertalot	2	0.4	7882	NA	NAVI	3.5	1
MCIR*	<i>Meridion circulare</i> (Greville) C.A. Agardh var. <i>circulare</i>	2	0.4	14763	AR	MERI	4.2	1
GEXL*	<i>Gomphonema exilissimum</i> (Grunow) Lange-Bertalot & Reichardt	2	0.4	7657	NA	GOMP	5	1
FCAP*	<i>Fragilaria capucina</i> Desmazieres var. <i>capucina</i>	2	0.4	6654	AR	FRAG	4.5	1
CPTG*	<i>Cocconeis placentula</i> Ehrenberg f. <i>anormale</i>	2	0.4	12119	MO	COCO	1	3
BPAX*	<i>Bacillaria paxillifera</i> (paxillifer) (O.F. Müller) Hendey var. <i>paxillifera</i>	2	0.4	20044	NI	BACI	2	3
BNEO*	<i>Brachysira neoexilis</i> Lange-Bertalot	2	0.4	7159	NA	BRAC	5	1
APEL*	<i>Amphipleura pellucida</i> Kützing	2	0.4	7081	NA	AMPI	4	1

IBD:

CODE	Abd.	CL1	CL2	CL3	CL4	CL5	CL6	CL7	Val.ind.	Sandre
CHSH	285	0,00000	0,00000	0,00000	0,02434	0,24034	0,38422	0,35110	0,954824980	11890
ABIO	37	0,00000	0,00049	0,00625	0,03205	0,09728	0,53062	0,33332	1,067874618	32063
NCPG	21	0,84623	0,11048	0,02177	0,01822	0,00319	0,00010	0,00001	1,435805882	15132
GOOL	15	0,00000	0,00091	0,00532	0,01521	0,07958	0,09144	0,80755	1,375829776	7702
GANT	13	0,00043	0,01750	0,01283	0,21537	0,35406	0,34543	0,05438	0,893852547	7630



Commentaires:

Sample site pictures



